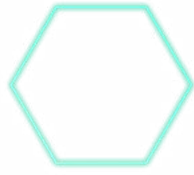




Powin's Commitment to ESG:

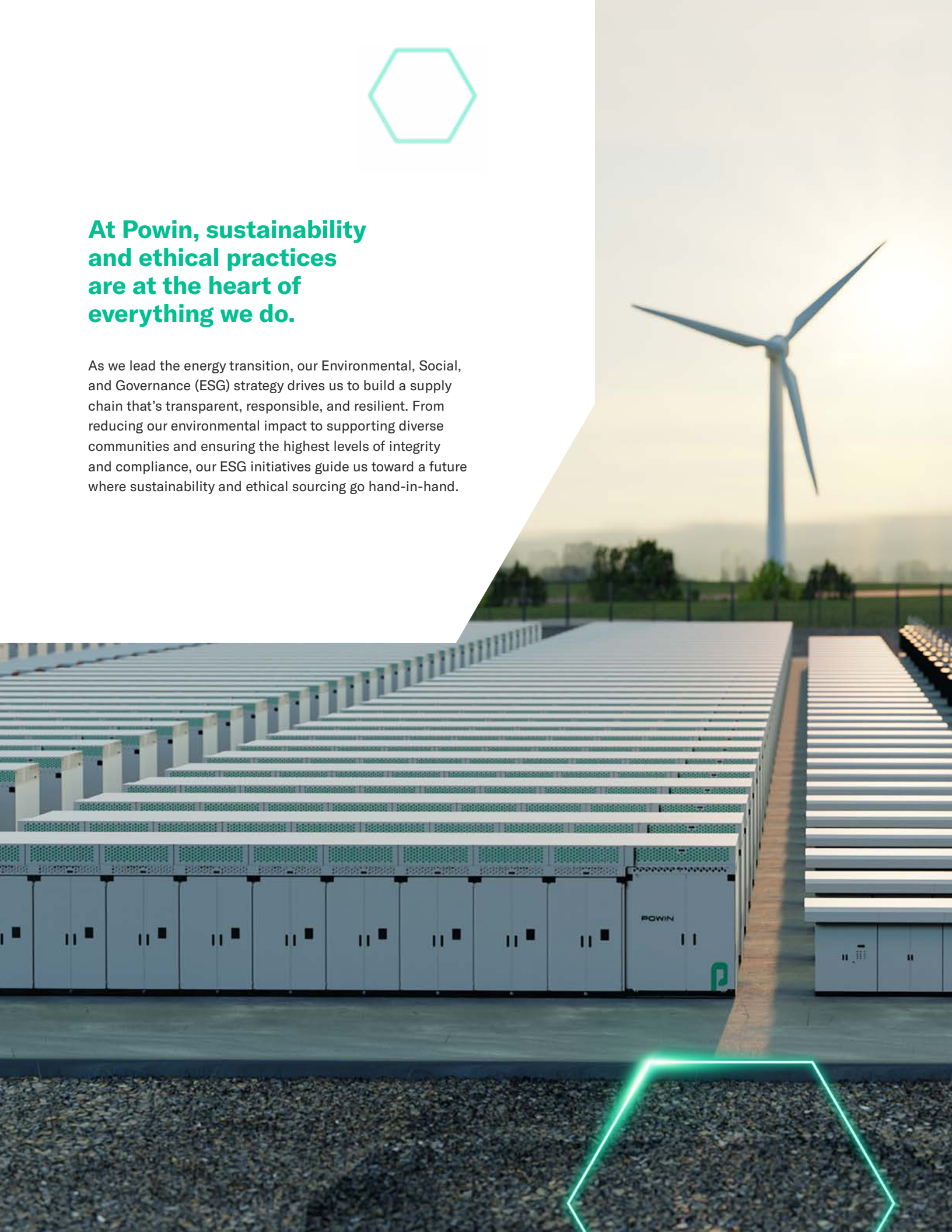
BUILDING A SUSTAINABLE AND ETHICAL SUPPLY CHAIN





At Powin, sustainability and ethical practices are at the heart of everything we do.

As we lead the energy transition, our Environmental, Social, and Governance (ESG) strategy drives us to build a supply chain that's transparent, responsible, and resilient. From reducing our environmental impact to supporting diverse communities and ensuring the highest levels of integrity and compliance, our ESG initiatives guide us toward a future where sustainability and ethical sourcing go hand-in-hand.



Environmental Stewardship:

REDUCING OUR CARBON FOOTPRINT

Sustainability is at the heart of everything we do. As part of our ESG framework, we actively work to reduce our carbon footprint and drive sustainable practices across our supply chain.



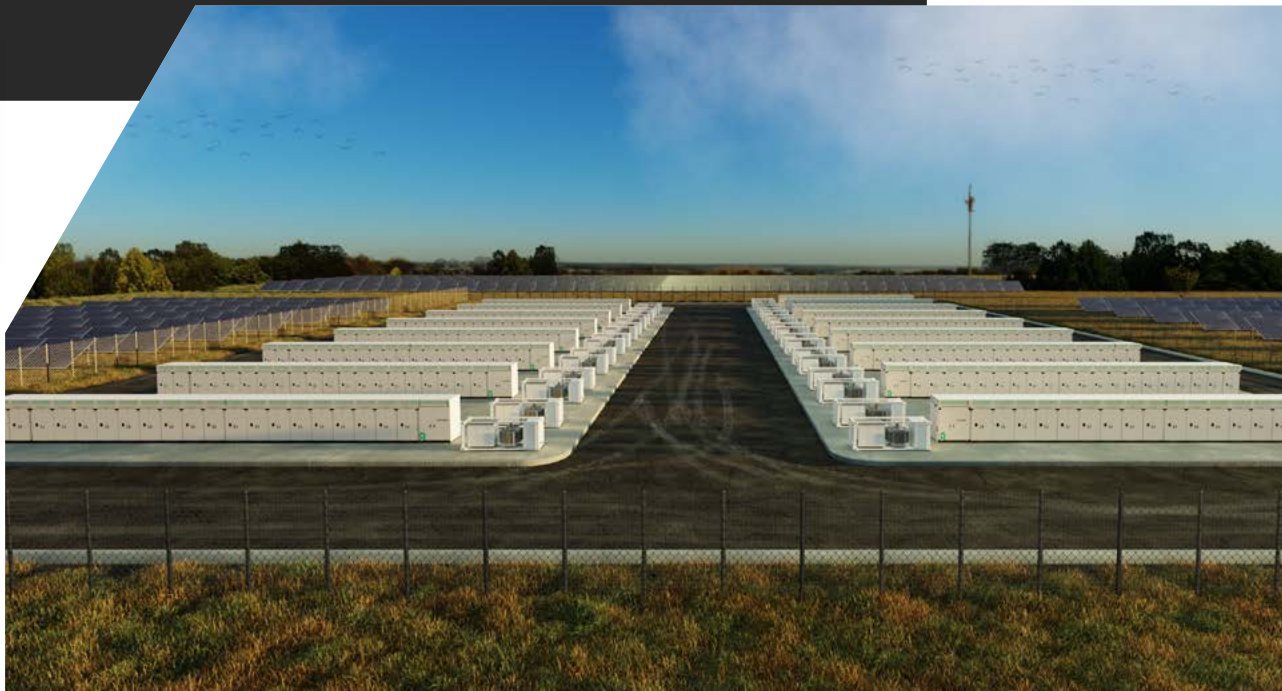
Eco-Friendly Supplier Practices: We carefully select suppliers who share our commitment to sustainability. From minimizing energy consumption to reducing waste, we prioritize eco-friendly suppliers who use renewable energy sources and integrate clean transportation solutions into their operations.



Lifecycle Assessments: We assess the environmental impact of our products throughout their lifecycle, from design and manufacturing to end-of-life recycling. We are committed to responsibly recycling our battery materials and are actively exploring ways to formalize a recycling program. While this is an ongoing process, we are dedicated to finding solutions that align with our sustainability goals.



Innovation for a Greener Future: Powin's ongoing innovations in battery technology focus on enhancing energy efficiency while reducing the environmental footprint of our systems. By constantly improving our product design and materials, we help our customers meet their sustainability goals while supporting global efforts to combat climate change.



Ethical Sourcing:

UPHOLDING INTEGRITY ACROSS THE SUPPLY CHAIN

Powin's supply chain is built on a foundation of ethical sourcing and transparency. We work closely with our suppliers to ensure that their practices align with our commitment to human rights and fair labor standards.



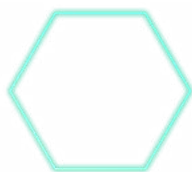
Comprehensive Supplier Due Diligence: Every supplier undergoes rigorous vetting to ensure they adhere to ethical labor practices and do not engage in forced labor. Powin's Supplier Code of Conduct reflects our zero-tolerance policy for unethical practices, and we conduct regular audits to verify compliance.



Transparency and Traceability: Our commitment to transparency remains strong, and we continuously strive to trace raw materials as far back as possible. We recognize that full traceability can be complex in certain global supply chains, but we are dedicated to improving our processes and working with suppliers to enhance transparency at every stage.



Collaboration with U.S. Customs and Border Protection (CBP): Powin regularly engages with U.S. CBP to align with best practices and ensure compliance with key regulations such as the Uyghur Forced Labor Prevention Act (UFLPA). This collaboration ensures that our supply chain remains free from forced labor and unethical sourcing practices.





Social Responsibility:

PROMOTING DIVERSITY AND INCLUSION

We believe that diversity and inclusion are key drivers of innovation and growth. Our ESG initiatives extend to fostering a diverse and inclusive supply chain that supports economic growth in underrepresented communities.



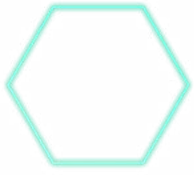
Supplier Diversity Program: We're working towards building a more inclusive supply chain by fostering relationships with Minority-Owned, Women-Owned, Disabled Veteran-Owned, LGBT-Owned, and Emerging Small Businesses. While we have made meaningful strides, we acknowledge that there is more to be done, and we are committed to continuous improvement in this area.



Fair and Equitable Opportunities: Powin is committed to creating an inclusive procurement process that evaluates suppliers based on their ability to meet our performance, price, and quality standards. We work to ensure that all qualified businesses have a fair opportunity to compete and thrive within our supply chain.



Empowering Local Communities: Through our partnerships with diverse suppliers, Powin is helping to create jobs, support local businesses, and foster economic growth in the communities we serve.



Governance and Compliance:

LEADING WITH INTEGRITY

Integrity and transparency are central to Powin's governance practices. Our ESG strategy is underpinned by strong governance that ensures accountability and compliance across our supply chain.



Adherence to Global Standards: Powin is committed to upholding international regulations, including anti-bribery laws, environmental standards, and human rights conventions. We regularly update our policies to reflect evolving global standards and ensure that our operations remain compliant with the latest regulatory requirements.



Code of Business Conduct and Ethics: Our Code of Conduct serves as a guide for our employees, partners, and suppliers, ensuring that ethical behavior is upheld at all times. The Code sets clear expectations for how we conduct business, covering topics from anti-corruption to workplace safety and privacy protection.



Supplier Audits and Certifications: To maintain the integrity of our supply chain, Powin regularly audits our suppliers to verify compliance with ethical, social, and environmental standards. We also encourage suppliers to obtain relevant certifications, demonstrating their commitment to responsible practices.



BENEFITTING OUR CUSTOMERS

Partnering with Powin means more than just reliable energy storage solutions—it means aligning with a company that prioritizes sustainability, governance, and ethical practices. Here's how our ESG initiatives benefit you:



Sustainability Leadership: By partnering with Powin, you align with a brand committed to reducing carbon emissions, promoting renewable energy, and driving environmental innovation. This positions your business as a leader in sustainability, meeting growing demand for eco-friendly practices.

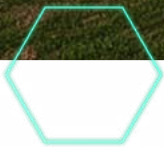


Resilient and Diverse Supply Chain: Our commitment to supplier diversity and inclusion means a more resilient supply chain. You gain access to innovative solutions from a wide range of suppliers, ensuring better performance, cost efficiency, and flexibility in a dynamic market.



Trust and Transparency: Powin's traceable, transparent supply chain ensures you can trust that our products are responsibly sourced, ethically produced, and compliant with global standards. This builds confidence in both your business and your customers.





A FUTURE BUILT ON **ESG** **AND ETHICAL** **SOURCING**

At Powin, our ESG initiatives and ethical sourcing practices are not just boxes to be checked – they are integral to our mission of leading the energy transition responsibly. We are committed to driving sustainable growth, reducing our environmental impact, and ensuring that human rights are upheld across our supply chain.



We invite you to partner with us on this journey. Learn more about Powin's ESG and ethical sourcing initiatives at www.powin.com/suppliers